

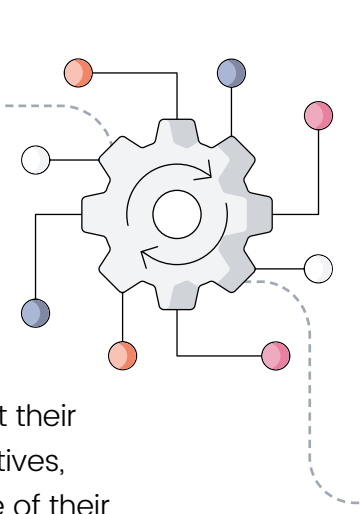


Optimizing Data Management

AN IN-DEPTH LOOK AT OCTOPAI'S OCTOMIZE
AI IMPACT AND CAPABILITIES



Octomize AI: A Technical Overview for Advanced Data Management



Octomize AI, an add-on to the Octopai platform, marks a significant advancement in data management tools, specifically engineered for the complex and evolving needs of modern data teams. This document provides a detailed overview of Octomize AI, outlining its key features, technical capabilities, and the potential impact on data management workflows.

At its core, Octomize AI is designed to address the practical challenges faced by data engineers and developers in managing and optimizing large and complex data sets. In today's data-driven business environment, the efficiency, accuracy, and security of data operations are paramount. Octomize AI responds to these needs by integrating advanced generative AI technology, utilizing the capabilities of GPT-4, within a framework that prioritizes security and compliance, leveraging Azure OpenAI services.

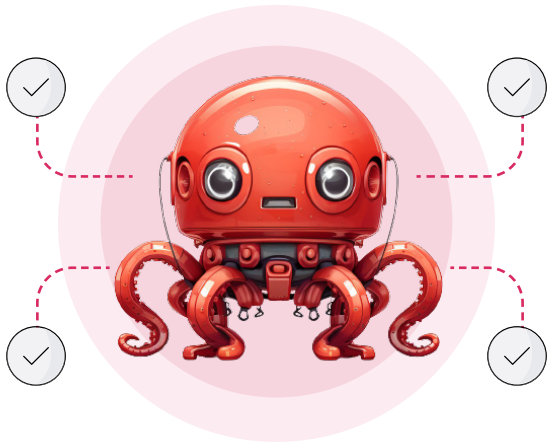
The primary value proposition of Octomize AI lies in its ability to automate and optimize tasks that traditionally require extensive manual intervention. This includes generating real-time data lineage maps for instant visibility into data dependencies, as well as advanced features for error detection and optimization in SQL queries. By automating these critical yet time-consuming tasks, Octomize AI not only enhances efficiency but also allows

data professionals to redirect their focus to more strategic initiatives, thereby maximizing the value of their expertise.

Octomize AI is designed with a user-centric approach, offering a no-code interface that simplifies complex data management tasks. This is particularly beneficial in environments where teams comprise varying levels of technical expertise. By making advanced data operations more accessible, Octomize AI facilitates broader team involvement in data-driven decision-making processes, enhancing overall productivity and collaboration.

One of the key challenges in data management is maintaining accuracy and compliance while adapting to rapid changes in data structures and requirements. Octomize AI proficiently addresses the need for documenting changes by automating the creation of comprehensive documentation for any alterations applied to scripts, be they fixes, optimizations, or conversions. This feature streamlines the process of recording changes, ensuring that modifications to data structures and queries are meticulously documented, thereby reducing the risk of errors and bolstering compliance.

Furthermore, Octomize AI is adept at handling dynamic data management scenarios, such as optimizing SQL



Server scripts, facilitating database migrations (e.g., from SQL Server to Google BigQuery or Snowflake), and translating technical data queries into

formats comprehensible to diverse team members. This adaptability makes Octomize AI an essential tool for data teams seeking to stay agile and responsive in a fast-paced data landscape.

The new ability represents a strategic enhancement to the Octopai platform, offering data engineers and data leaders a powerful tool that aligns with the technical, operational, and strategic demands of modern data management.

Key Features of Octomize AI

✓ **Real-Time Data Lineage Maps**

Octomize AI provides real-time data lineage mapping capabilities, a critical feature for modern data management. This tool enables data engineers to instantly visualize dependencies and assess the impacts of changes across complex data ecosystems. By automating the process of data lineage mapping, Octomize AI not only saves time but also enhances the accuracy of these maps, ensuring that data engineers can quickly identify and address potential issues in data workflows.

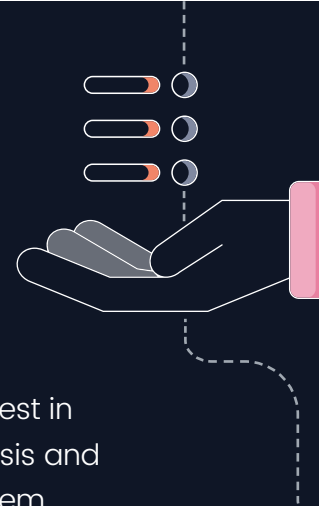
✓ **Advanced GenAI Technology Integration**

The integration of GenAI technology, specifically leveraging GPT-4, is a cornerstone of Octomize AI. This advanced AI capability automates complex data management tasks, such

as SQL query error detection, optimization, and migration. The use of GPT-4 within Octomize AI ensures that data teams are equipped with the latest in Generative AI-driven data analysis and management tools, providing them with sophisticated solutions to tackle complex data challenges.

✓ **Enhanced Security with Azure OpenAI**

Recognizing the critical importance of security in data management, Octomize AI utilizes Azure OpenAI services to ensure that the advanced LLM capabilities operate within a secure and compliant environment. This integration addresses the stringent security requirements and compliance standards that are essential in today's data-sensitive landscape, offering peace of mind to organizations that their data operations are protected against security vulnerabilities.





✓ **Domain-Specific Optimization**

Octomize AI goes beyond general-purpose GenAI by offering pre-engineered prompts and solutions that are fine-tuned for specific data domain tasks. This domain-specific optimization results in more accurate, relevant, and efficient outcomes for data teams, allowing them to tackle specialized data challenges with greater precision.

✓ **Immediate Data Lineage Insight**

Octomize AI's capability to provide immediate insight into script data lineage is particularly beneficial for organizations heavily reliant on data analytics and governance. The ability to swiftly understand and map data transformations streamlines the data management process, making it more efficient and less prone to errors.

✓ **Latest Technology Utilization**

By incorporating the most recent model of GPT-4, Octomize AI ensures that data teams are working with the latest advancements in natural language processing and AI. This commitment to using cutting-edge technology translates into superior performance, more refined features, and an overall enhancement in the data management process compared to older AI models.

✓ **Error Detection and Query Optimization**

A standout feature of Octomize AI is its

ability to not only detect errors in SQL queries but also to provide optimized solutions. The tool leverages its AI capabilities to parse complex SQL scripts, identify potential issues, and suggest optimized versions of the queries. This feature is invaluable in reducing the time and effort required for manual query optimization, ensuring that data operations are efficient and accurate.

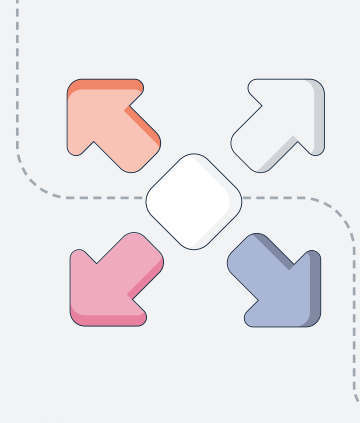
✓ **Migration Support**

For organizations undergoing data migration projects, such as moving from SQL Server to various databases or data lakes like Google BigQuery and Redshift, Octomize AI offers crucial support. The tool automates the script adjustments needed for compatibility with new systems, standardizing the migration process, and minimizing the risk of syntactical or functional discrepancies that could impact data quality or query performance.

✓ **Automated Documentation for SQL Scripts and Stored Procedures**

Octomize AI addresses one of the more tedious aspects of data management: documentation. It automates the creation of both technical and business documentation, catering to different audiences within an organization. This automation not only saves time but also ensures that the documentation is comprehensive and up-to-date, facilitating better understanding and governance of data processes.

Beneficiaries of Octomize AI



Data engineers and developers, especially those who value precision and efficiency, stand to gain significantly from Octomize AI. They often navigate complex data environments and require tools that can simplify and expedite their workflows. Octomize AI offers solutions such as automated data mapping and query optimization, which are particularly beneficial in enhancing their operational efficiency and accuracy.

Data Leaders will find Octomize AI highly beneficial. Responsible for guiding their organizations' data strategies, these professionals require tools that ensure efficiency, security, and compliance. Octomize AI's features like real-time data lineage mapping and secure AI integration align well with their strategic objectives, aiding them in making well-informed decisions regarding data infrastructure.



Teams Involved in Data Migration

Organizations undergoing data migration, such as shifting from SQL Server to Snowflake, will benefit from the automated and optimized migration processes offered by Octomize AI. Its ability to streamline these transitions reduces manual workload and error risk, facilitating a more efficient and reliable migration experience.



Organizations with Varied Technical Skill Levels

Octomize AI is also advantageous for

organizations with diverse levels of technical expertise within their data teams. Its intuitive interface and the capability to simplify complex SQL queries make it accessible and useful for a wide range of team members, fostering better collaboration and enhanced productivity across different skill levels.



Data Governance and Compliance Teams

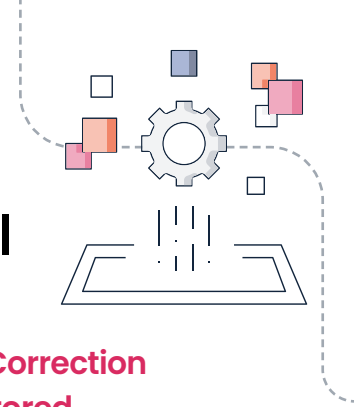
For teams focusing on data governance and compliance, Octomize AI proves to be a valuable tool. Its automated documentation and data lineage mapping are tailored to assist in maintaining robust governance standards and meeting regulatory requirements. This ensures transparent and compliant data processes, facilitating adherence to legal and industry standards.



Cost-Conscious Companies

Companies seeking efficient and cost-effective data management solutions will find Octomize AI particularly advantageous. By automating routine tasks and minimizing the need for manual data handling, Octomize AI offers significant cost savings. This allows companies to reallocate their resources more effectively, focusing on strategic tasks and enhancing overall operational efficiency.

Practical Applications of Octomize AI



Optimization of Complex SQL Scripts and Stored Procedures

Octomize AI automates the optimization of complex SQL scripts, which typically include multiple table joins, nested queries, and the use of various functions. This feature streamlines the process of enhancing script performance and readability, traditionally a time-consuming task requiring extensive manual effort. The result is improved maintainability and traceability of scripts, reduced manual auditing, minimized errors, and enhanced overall script performance.

Broad Migration Support Across Multiple Database Platforms

A key application of Octomize AI is its support for migration projects across a wide array of database platforms, including Oracle, Teradata, Netezza, Vertica, Snowflake, MySQL, Hive, PostgreSQL, DB2, Redshift, Google Big Query, and SAP HANA. Octomize AI facilitates the transition between these diverse environments by automating script adjustments for compatibility, thus standardizing the migration process. This reduces the time and effort required for manual code modifications and lowers the risk of syntactical or functional discrepancies that could affect data quality or query performance in the new environment.

Error Detection and Correction in SQL Queries and Stored Procedures

Octomize AI is adept at detecting and correcting errors within SQL queries and complex Stored procedures, a critical capability given the potential risks associated with oversights in data management. This capability is especially valuable for lengthy or complex stored procedures where manual error detection is both challenging and time-intensive.

Automated Documentation for Diverse Stakeholders

The tool also automates the creation of both technical and business documentation. This is essential for data governance, as it provides comprehensive and current information to both technical team members and non-technical stakeholders, enabling informed decision-making and effective data management.

Real-Time Data Lineage Mapping

The real-time data lineage mapping provided by Octomize AI is invaluable for instantly visualizing the impact of data changes. This feature is particularly beneficial during query modifications or data migration projects, offering immediate insights into potential repercussions within the data ecosystem, thereby helping to maintain data integrity.



Democratization of Data Access

Finally, Octomize AI contributes significantly to the democratization of data within organizations. By translating complex SQL queries into more accessible formats, it enables a broader range of team members, including those with limited technical expertise, to understand and engage with data queries. This not only expedites decision-making processes but also boosts overall organizational productivity by making data insights more accessible and actionable for a wider audience.

Benefits of Using Octomize AI



Enhanced Operational Efficiency

One of the primary benefits of using Octomize AI is the significant enhancement in operational efficiency it offers. By automating complex and time-consuming tasks such as data lineage mapping and SQL query optimization, Octomize AI dramatically reduces the manual effort required in these areas. This automation not only speeds up processes but also ensures a higher level of precision in tasks that are critical to data management. The time saved can be redirected to more strategic tasks, thereby maximizing the productivity of the data team.



Improved Accuracy and Risk Mitigation

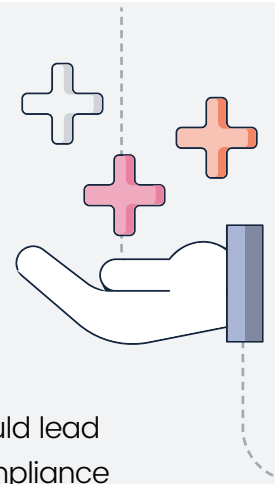
Octomize AI's advanced real-time parsing algorithms and GenAI capabilities play a pivotal role in improving the accuracy of data operations. Its ability to detect and

correct errors in SQL queries and its sophisticated data lineage mapping reduce the likelihood of errors that could lead to data inconsistencies or compliance issues. This increased accuracy is crucial for risk-averse organizations, as it significantly mitigates the risks associated with manual data handling and decision-making.



Cost Savings

The automation and optimization provided by Octomize AI translate into substantial cost savings for organizations. By reducing the reliance on manual labor for routine and complex data tasks, companies can allocate their human resources more effectively, focusing on areas that add greater value to the business. This shift not only saves direct costs in terms of man-hours but also results in long-term savings through enhanced efficiency and reduced risk of costly errors.





Streamlined Migration Processes

Octomize AI supports a broad range of migration projects, including transitions to and from platforms like Oracle, Teradata, Netezza, Vertica, Snowflake, MySQL, Hive, PostgreSQL, DB2, Redshift, Google Big Query, and SAP HANA. This capability of Octomize AI simplifies and streamlines the migration process, making it faster and more reliable. The tool's ability to automate script adjustments for compatibility significantly reduces the time and effort involved in migrations, thus minimizing operational downtime and enhancing the smooth transition to new platforms.



Automated Documentation for Compliance and Governance

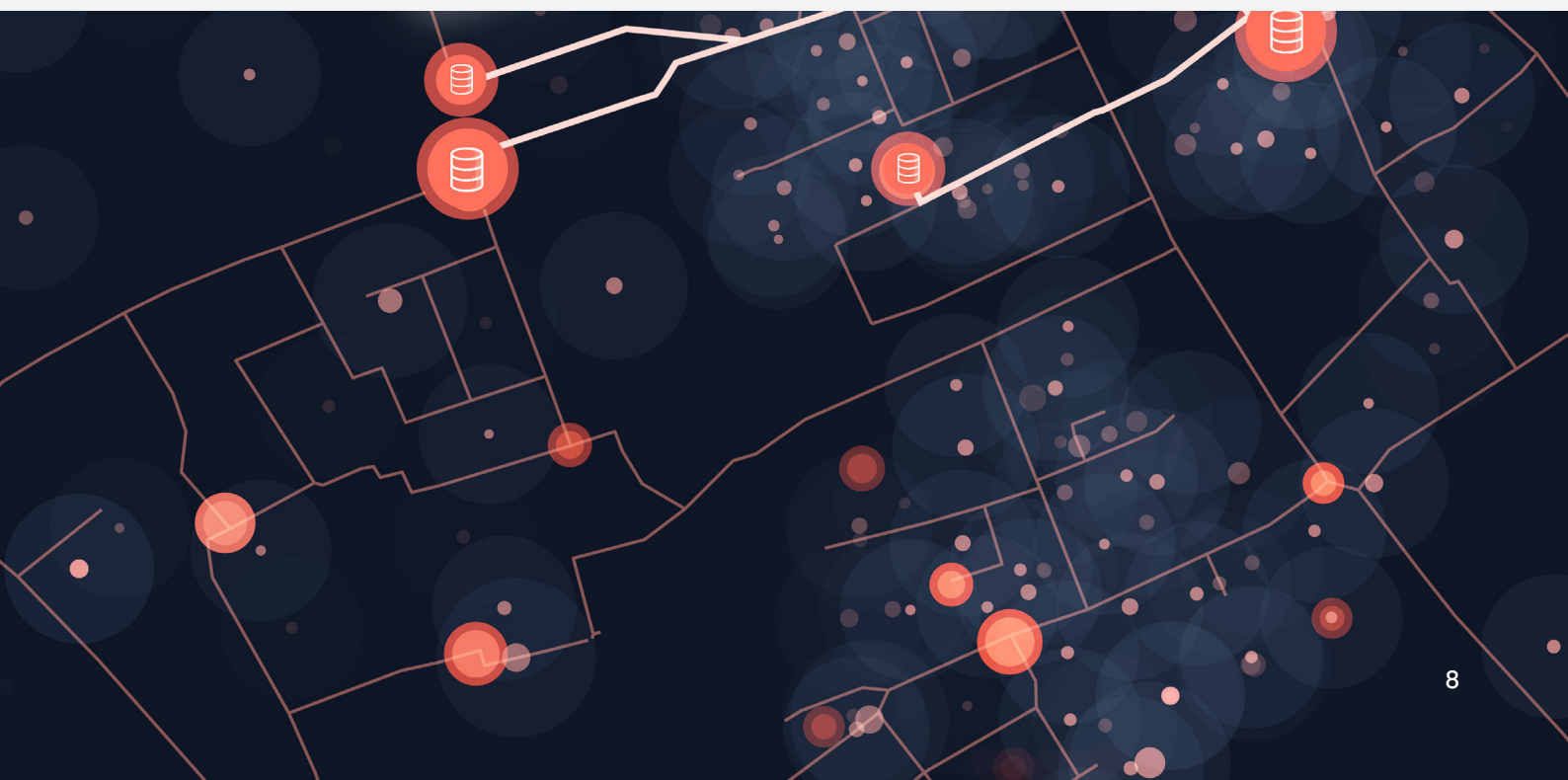
Automated documentation is another significant benefit offered by Octomize AI. The tool generates detailed documentation for both technical

and business stakeholders, ensuring that all changes and processes are well-documented and transparent. This is particularly beneficial for data governance and compliance, as it ensures that all operations are recorded and can be audited, thereby facilitating compliance with various regulatory standards.

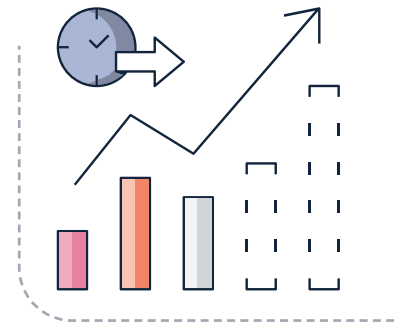


Democratization of Data and Enhanced Collaboration

By making complex data operations accessible to a broader range of team members, Octomize AI democratizes data within organizations. This accessibility is key in promoting collaboration across different departments and skill levels, enabling non-technical stakeholders to engage more effectively in data-driven discussions and decision-making. This aspect of Octomize AI not only fosters a more inclusive data culture but also enhances overall organizational productivity.



The Future Impact of Octomize AI on Data Teams: Enhancing Productivity and Strategic Focus



As data teams navigate the complex and rapidly evolving landscape of modern data management, tools like Octomize AI play a pivotal role in shaping their future workflows and strategies. The introduction of Octomize AI into data management practices promises not only to streamline current operations but also to open new avenues for productivity and strategic focus.



Fostering a Data-Centric Culture

Octomize AI empowers data teams to build a more data-centric culture within their organizations. By automating routine and complex tasks, it allows these teams to focus on extracting deeper insights from their data. This shift towards a more strategic use of data can drive innovation, enhance decision-making processes, and create new opportunities for business growth.



Enhancing Productivity Through Automation

The automation capabilities of Octomize AI significantly enhance the productivity of data teams. By reducing the time spent on manual data mapping, query optimization, and error detection, teams can allocate more resources to

developing data-driven strategies and solutions. This increased productivity not only benefits the data teams but also has a ripple effect across the entire organization, as data becomes a more integral part of every function and decision.



Enabling Agile Responses to Data Challenges

In a landscape where data requirements and structures are constantly changing, the agility provided by Octomize AI is invaluable. Its ability to adapt to different data environments and requirements ensures that data teams can respond quickly to new challenges and opportunities. This agility is crucial in maintaining a competitive edge in the data-driven economy.



Supporting Strategic Decision-Making

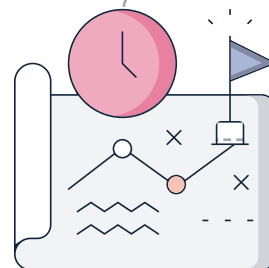
The detailed insights and accurate data mapping provided by Octomize AI enhance the ability of data teams and decision-makers to make strategic decisions. With a clearer understanding of their data landscape and the impacts of their decisions, they can navigate complex scenarios with greater confidence and foresight.



Preparing for Future Data Trends

As the field of data management continues to evolve, tools like Octomize AI equip data teams to stay ahead of emerging trends. Whether it's adapting to new data regulations, integrating emerging technologies, or exploring new data sources, Octomize AI provides the flexibility and capability needed to keep pace with these changes.

Conclusion: A Strategic Asset for Data Teams



The future impact of Octomize AI on data teams is profound. It goes beyond mere efficiency gains to fundamentally transform how data teams work and contribute to their organizations. By enhancing productivity, fostering strategic focus, and enabling agility, Octomize AI positions itself as a strategic asset for any data team looking to thrive in the data-driven future.

Embark on your journey to cloud transformation with the power of data lineage. Leverage the advanced capabilities of Octopai's data lineage tools to navigate the complexities of cloud migration.

Ensure your migration strategy is not only technically sound but also strategically aligned with your business objectives.

Start transforming your data management approach today for a successful and empowered future in the cloud.

See how Octopai can ensure a smoother data transformation to the cloud

[Schedule a Demo](#)